

SPRING WORKSHOPS 2025



THE EXPERTS IN ALTERNATIVE PHOTOGRAPHIC PROCESSES SINCE 1980

CALL OUR TECH SUPPORT PROFESSIONALS WITH YOUR TOUGHEST PROBLEMS.

1-877-817-4320 US/CAN

0207 0784187 LONDON UK (GMT -700)

BOSTICK-SULLIVAN.COM

### MARCH 6-8, 2025

#### 8"x10" PLATINUM/PALLADIUM

PRODUCE STUNNINGLY BEAUTIFUL HANDCRAFTED 8"x10" IMAGES ON WATERCOLOR RAG PAPER, USING OUR VERSATILE PLATINUM AND PALLADIUM NA2 PRINTING METHOD. PARTICIPANTS LEARN OUR EASY 5-STEP PROCESS FOR MAKING CALIBRATED INKJET NEGATIVES. WE WANT STUDENTS TO SPEND THEIR TIME MAKING ART IN THE STUDIO. NOT FIGHTING WITH PHOTOSHOP!

FINISHED PRINTS ARE HEAT-PRESSED TO FLATTEN, THEN INDIVIDUALLY SLEEVED AND PACKAGED FOR SAFE TRANSPORTATION, STUDENTS TYPICALLY PRODUCE 12-15 NEGATIVES AND TAKE HOME 25-28 FINISHED PRINTS. AS A BONUS: STUDENTS ARE ABLE TO MAKE ONE ULTRA-LARGE FORMAT NEGATIVE AND PRINT UP TO 16"x20"! CLASS INSTRUCTOR: DANA SULLIVAN

**CLASS FEE \$1325**



### MARCH 20-22, 2025

#### WETPLATE TINTYPES

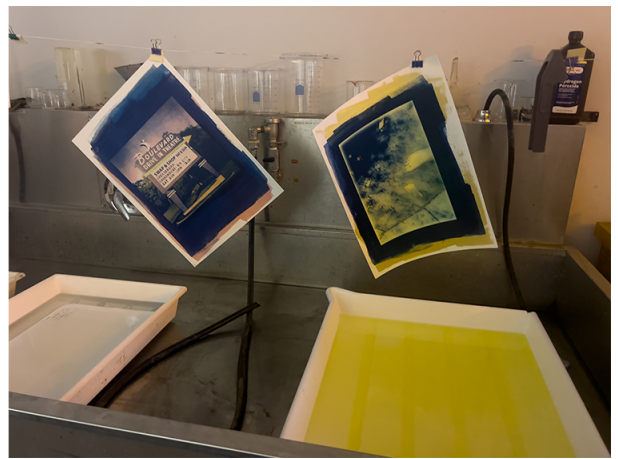
##### INDIGENOUS PORTRAITURE AND STILL LIFES

JOIN OUR OUR MOST POPULAR WETPLATE TINTYPE WORKSHOP. WORK WITH OUR INDIGENOUS MODELS TO CAPTURE INTIMATE MOMENTS WITH A SOUTHWEST FLAIR. STUDENTS ARE ENCOURAGED TO BRING FRIENDS OR FAMILY MEMBERS FOR A HALF-DAY PORTRAIT SESSION, SO STUDENTS CAN SHARE THE PROCESS AND TAKE HOME A PERSONALIZED MEMENTO. WE SUPPLY 4X5, 5X7 AND 8X10 CAMERAS, TRIPODS AND LIGHTING GEAR FOR OUTDOOR AND INDOOR SHOOTING. STUDENTS MAY BRING THEIR OWN CAMERA GEAR IF THEY WISH. INSTRUCTORS: JAMES O'CONNELL AND DANA SULLIVAN.

**CLASS FEE \$1475**



S  
P  
R  
I  
N  
G  
W  
O  
R  
K  
S  
H  
O  
P  
S  
2  
0  
2  
5



**APRIL 10-12, 2025**

### **TRI-COLOR GUM BICHROMATE**

JOIN LA-BASED DR. MOHAN BHASKER FOR OUR TRI-COLOR GUM BICHROMATE WORKSHOP.

THE GUM BICHROMATE PROCESS IS A TECHNIQUE THAT ALLOWS THE ARTIST TO EXPOSE MULTIPLE LAYERS OF CYAN, YELLOW, MAGENTA AND BLACK PIGMENTS TO CREATE HANDCRAFTED FULL COLOR PHOTOGRAPHS ON FINE ART WATERCOLOR PAPER.

LEARN EVERY ASPECT OF THE PROCESS, FROM THE SELECTION AND PREPARATION OF PAPERS, MIXING PIGMENTS, COATING PAPER, AND PREPARING MULTIPLE LAYERS OF EMULSION FOR MAXIMUM COLOR DENSITIES.

**CLASS FEE \$1500**

**APRIL 17-19, 2025**

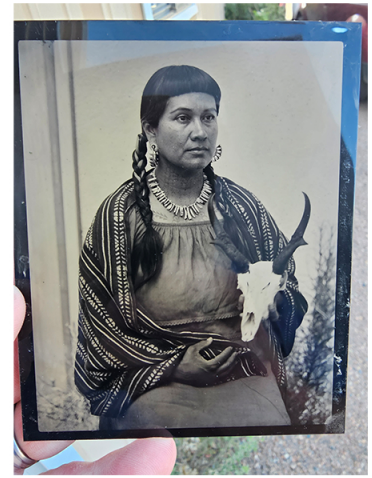
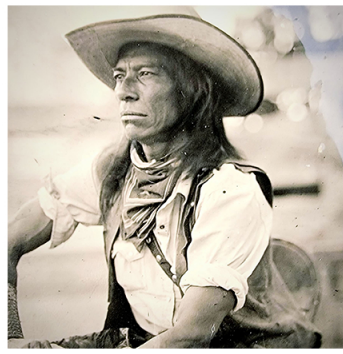
### **8"X10" GUM BICHROMATE OVER PLATINUM/PALLADIUM**

MASTER PRINTER AND PHOTOGRAPHER KERIK KOUKLIS LEADS THIS AMAZING WORKSHOP AT THE BOSTICK & SULLIVAN STUDIO DARKROOM. STUDENTS CREATE PLATINUM PRINTS, THEN APPLY AND EXPOSE WATERCOLOR PIGMENT OVERLAYS, ADDING COLOR, WARMTH, AND A HAUNTING HALO TO THEIR PRINTS! OPEN A VIRTUAL PAINTER'S PALETTE OF COLORS TO USE IN YOUR ART.

STUDENTS CREATE CALIBRATED NEGATIVES WITH OUR EASY 5-STEP PROCESS. THESE NEGATIVES ARE THEN USED TO EXPOSE 8"X10" PLATINUM AND PALADIUM PRINTS. AFTER PROCESSING AND DRYING THE PLATINUM PRINTS, STUDENTS THEN COAT AND EXPOSE ONE OR MORE LAYERS OF GUM PIGMENT TO ADD COLOR AND CONTRAST TO THEIR PHOTOGRAPH. THE DENSITY AND CLARITY OF THE PLATINUM PRINT COMBINED WITH THE SUBTLETY OF THE WATERCOLOR PIGMENTS COMPLIMENT EACHOTHER, REINFORCING THE HANDMADE ASPECT OF THE FINAL THE PRINT.

**CLASS FEE \$1475**





**APRIL 24-26, 2025  
WETPLATE TINTYPES**

**INDIGENOUS PORTRAITURE AND STILL LIFES**

JOIN OUR OUR MOST POPULAR WETPLATE TINTYPE WORKSHOP. WORK WITH OUR NATIVE AMERICAN MODELS TO CAPTURE INTIMATE MOMENTS WITH A SOUTHWEST FLAIR. STUDENTS ARE ENCOURAGED TO BRING FRIENDS OR FAMILY MEMBERS FOR A HALF-DAY PORTRAIT SESSION, SO STUDENTS CAN SHARE THE PROCESS, AND TAKE HOME A PERSONALIZED MEMENTO. WE SUPPLY 4X5, 5X7 AND 8X10 CAMERAS, TRIPODS AND LIGHTING GEAR FOR OUTDOOR AND INDOOR SHOOTING. STUDENTS MAY BRING THEIR OWN CAMERA GEAR IF THEY WISH. INSTRUCTORS: ROB GIBSON AND DANA SULLIVAN.

**CLASS FEE \$1475**

**MAY 15-17, 2025**

**11"X14" AND 16"X20" PLATINUM/PALLADIUM**

**ADVANCED ULTRA-LARGE FORMAT PRINTING**

TAKE YOUR PLATINUM AND PALLADIUM ART TO THE NEXT STEP - BY GOING LARGE! STEP UP FROM 8"X10" BY GOING TO 11"X14" AND LARGER, IN THIS ADVANCED-LEVEL CLASS. STUDENTS LEARN HOW TO STEADY THEIR WORKFLOW TO MAXIMIZE SUCCESS, WHEN WORKING UNDER REAL WORLD CONDITIONS. STUDENTS PROVIDING HIGH RESOLUTION FILES CAN PRINT UP TO 16"X20" NEGATIVES, AND CREATE ULTRA-LARGE FORMAT PRINTS READY FOR MATTING AND FRAMING.

**CLASS FEE \$1550**





THE EXPERTS IN ALTERNATIVE PHOTOGRAPHIC PROCESSES SINCE 1980

CALL OUR TECH SUPPORT PROFESSIONALS WITH YOUR TOUGHEST PROBLEMS.

1-877-817-4320 US/CAN

0207 0784187 LONDON UK (GMT -700)  
BOSTICK-SULLIVAN.COM

**ABOUT OUR WORKSHOPS:**

ALL BOSTICK & SULLIVAN WORKSHOPS TAKE PLACE AT OUR STUDIO DARKROOM FACILITY LOCATED AT 1560 CENTER DRIVE, SANTA FE NM 87507. OUR 1800 SQUARE FOOT STUDIO HAS DARKROOM FACILITIES ACCOMMODATING UP TO 6 STUDENTS, PLUS INDOOR STUDIO SPACE FOR SHOOTING WITH STROBES AND CONTINUOUS LIGHTING. WE OPEN THE DOORS AT 9 AM AND CLASSES START AT 10 AM.

WE PROVIDE ALL CHEMISTRY, PAPER, FINISHING MATERIALS, SLEEVES, PACKAGING, AND FREE SHIPPING OF YOUR PRINTS (IF NEEDED) FOR EVERY WORKSHOP. THE COST OF YOUR CLASS INCLUDES DAILY LUNCHES DELIVERED FROM

SOME OF OUR FAVORITE LOCAL RESTAURANTS. WE SUPPLY COFFEE, DRINKS, AND VARIOUS SNACK FOODS EVERY DAY.

TRAVEL INFO: PARTICIPANTS USUALLY FLY INTO SANTA FE OR ALBUQUERQUE. ALBUQUERQUE AIRPORT IS APPROXIMATELY A 50 MINUTE DRIVE, WHILE SANTA FE AIRPORT IS 4.5 MILES FROM OUR STUDIO. WE RECOMMEND THE LA QUINTA INN OR DOUBLETREE BY HILTON AS HOTELS. LA QUINTA INN IS A 8-10 MINUTE WALK FROM THE STUDIO, OR 2 MINUTES BY CAR. DOUBLETREE IS A FIFTEEN WALK, OR 3 MINUTES BY CAR RIDE.

**OUR INSTRUCTORS:**



DANA SULLIVAN  
B&S CHIEF CHEMIST  
WORKSHOP COORDINATOR



KERIK KOUKLIS  
YOSEMITE WORKSHOP LEAD  
FINE ART MASTER PRINTER



ROB J. GIBSON  
B&S WETPLATE STUDIO MANAGER  
EDUCATOR & ADVENTURER



JAMES O'CONNELL  
WETPLATE STUDIO PROPRIETOR  
FORMER B&S DARKROOM MANAGER



MOHAN BHASKER  
MASTER FINE ART PRINTER  
CLASSIC SCIENTIFIC BACKGROUND